

VISION & CHANGE ALIGNMENT MAP

VISION

- CHANGE PATHWAYS
- HIRING & SUPPORTING THE BEST FACULTY
- RECRUITING & SUPPORTING TALENTED STUDENTS
- ENGAGING EXCEPTIONAL STAFF
- MODERNIZING SYSTEMS & PROCESSES
- 2020 & SPACE PLANNING

GUIDELINES

For Project Priorities

Does it Impact...

RESEARCH EXCELLENCE?

ACADEMIC DISTINCTION?

STUDENT SUCCESS?

SERVICES & SUPPORT?

PROFESSIONAL DEVELOPMENT?

ORGANIZATIONAL SUSTAINABILITY?

DIVERSITY & INCLUSION?

2017 PRIORITIES

- Computational Science & Data Analytics
- Sustainability
- Inequality, Power & Social Justice
- Adaptive & Functional Matter
- Entrepreneurship & Management
- Human Health Science
- Foundations

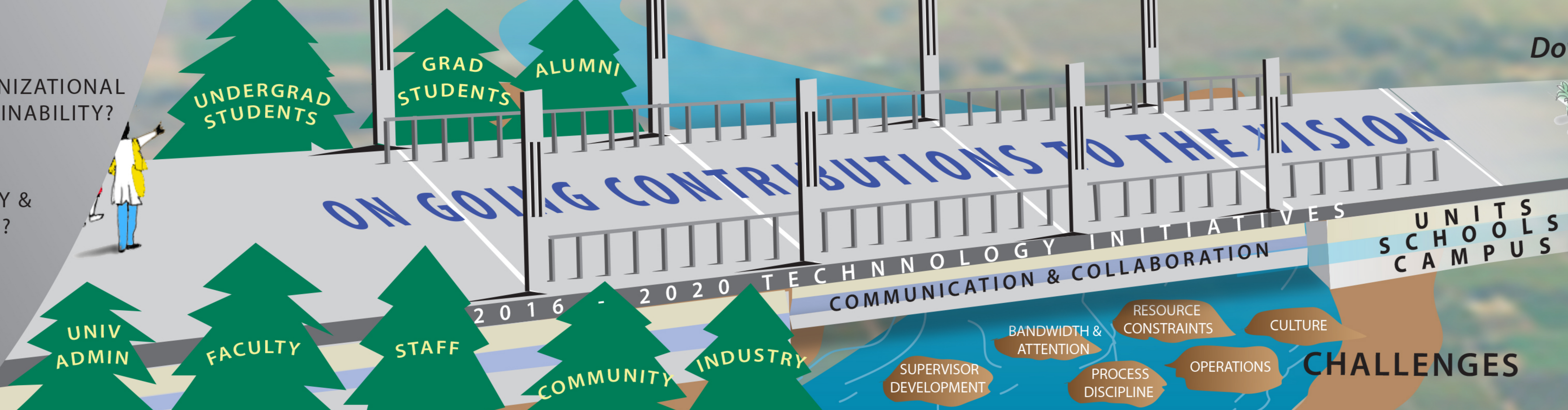
NEW PRIORITIES SET ANNUALLY

- Expand Graduate Students
- Growing Enrollment
- Undergraduate General Education
- Performance Evaluation
- Merit/Equity Pay
- Professional Development
- Technology Improvements
- UC Path - payroll system
- Business Process Improvements
- Org Redesign
- 2020 Project
- Downtown Campus Center

UC Merced

- Culture of Inquiry, Discovery & Learning**
 - Active, Engaged Campus Community
 - Lifelong Learning
- Enriching the Valley**
 - Individuals, Families, and Communities
 - Research Agenda
 - Water • Ag • New Tech
 - Healthcare • Workforce
- Sustainable by Design**
 - Environment • Living Lab
 - Academic Distinction
 - Enduring Quality
- Partnering with the Emerging California**
 - Community Involvement
 - Citizenship Education
 - Giving Back
- Leading in Creativity & Innovation**
 - Faculty • Students • Staff
 - National/International Model
- Engaging the Public in Scholarship & Creativity**
 - Leadership
 - Social skills
 - Intellectual Disposition
- Excellence in Research**
 - Carnegie R1 Designation
 - Large scale, Center Grants
 - Natnl Academy Recog. • Ph.D. Placements
 - Integrating Arts, Humanities & Sciences
- Transformative Education**
 - Leadership
 - Social skills
 - Intellectual Disposition

STAKE HOLDERS



UC Merced Campus

Downtown Center

Merced

Fresno Center

VALUES

- Academic Freedom • Diversity • Community
- Kindness • Collaboration • Stewardship